

SLIDE SENSOR

8 mm Slide Sensor

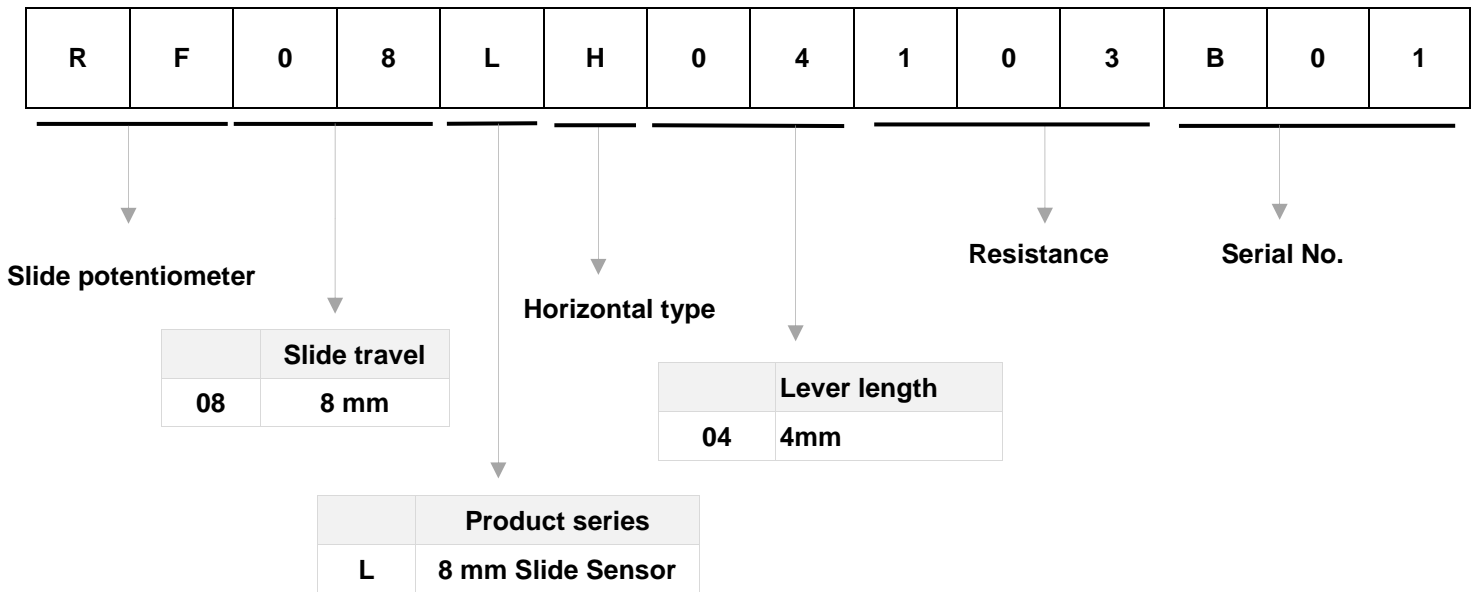


◆ FEATURE

- High-precision linearity,
- Space saving design contribute to lighter weight and smaller size of the set.

◆ APPLICATIONS

- Exclusive for head light angle detection with accuracy and space-saving design.



◆ COMMON SPECIFICATIONS

Characteristics	Specification
Operating temperature range	-40°C to +105°C
Operating force	120 gf MAX
Stopper strength	500gf / 3 sec
Lever push-pull strength	300gf / 3 sec
Solder heat resistance	Lower than 260°C for less than 5 seconds
Total resistance	$3K\Omega < R_a \leq 30K\Omega$
Total resistance tolerance	±20%
taper	Linear
Linearity (absolute)	±3%
Insulation resistance	100MΩ min. 250V DC
Voltage proof	10 sec 250V AC
Sliding service life	100,000 cycles

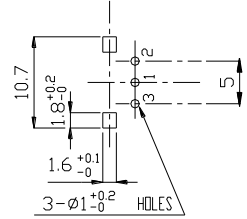
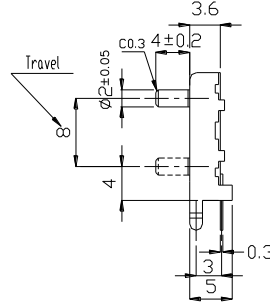
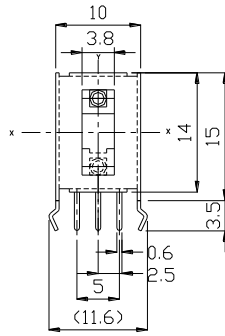
SLIDE SENSOR

8 mm Slide Sensor

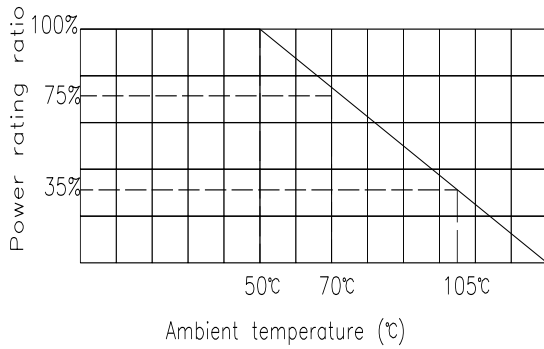
DIMENSIONS

Unit : mm

RF08LV



◆ POWER RATING CURVE :



◆ REFERENCE CHARACTERISTIC CURVE

